

Hi-Guard Chain (E)



Highly protective coating that goes far beyond the performance of nickel plating

Hi-Guard Chain has higher corrosion resistance next to stainless steel chains. The surface of the chain is finished in non-gloss white highly protective coating. It has superb resistance to anti-corrosion and rusting. It has equal strength to standard roller chains, and can be used in circumstances where strength higher than that of stainless steel chains is required.

Features

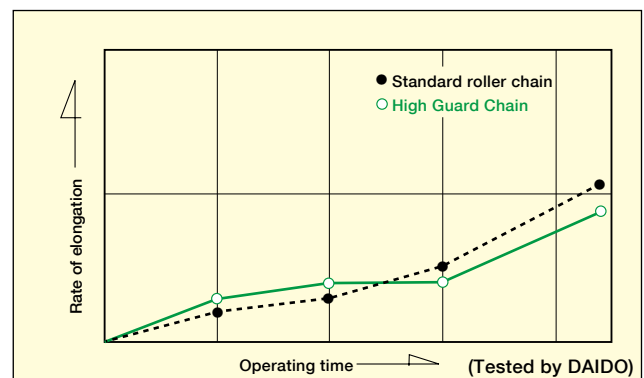
- Since high guard coating acts as a sacrificial anode for the chain, you can expect sufficient corrosion resistance even when the coating has come off to some extent.
- The coating consists of environmentally friendly chromium free material. To comply with the EU's Restriction of Hazardous Substances (RoHS) Directive, hexavalent chromium is not used.

Recommended uses

- Applications require both strength and corrosion resistance.
Multilevel parking facility, moving decks, cleansing lines etc.
- Conditions exposed to rain or sea water
Machines installed outside, amusement machines.



Wear resistance





Selection of chains

High Guard Chain has strength equivalent to standard roller chain. Refer to p.122~124 for chain selection.

Connecting links and offset links

RJ type connecting links are used for High Guard Chains #60 or smaller and CJ type connecting links for #80 or larger. 2POJ offset links can be used for sizes #25 and #35, and OJ and 2POJ for all other sizes.

Sprockets

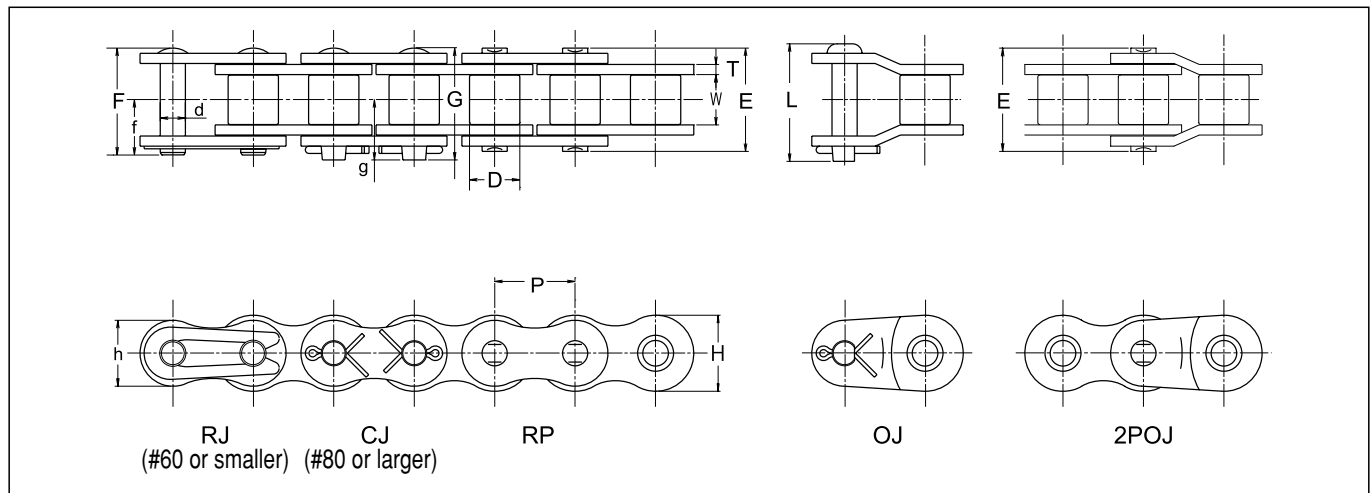
Standard sprockets for High Guard Chains can be used since their dimensions are the same as those of standard roller chains.

Caution

- ① Use stainless steel chains if the chains come in direct contact with food.
- ② High Guard Chain does not have a gloss like the plated chain.
- ③ High-guard coating has superb general corrosion resistance, but has poor alkaline and acidic resistance.
- ④ Unless not so specified by the customer, chains are coated with grease before delivery. If possible, lubricate the spaces between pins and bushings and bushes and rollers. Please use the recommended lubricant (p.134) for the maintenance of the chain since lubrication using grease can cause flexion failure.
- ⑤ Please be noticed that the surface layer might come off from sliding part when operation.

Roller Chains for Power Transmission

Environment Resistant Chain Series



Dimensions

Unit (mm)

| Chain No. | Pitch P | Roller link width | | Roller (Bush) dia. D | Pin | | | | | | Plate | | | Avg. tensile strength | | Max. allowable load | | Approx. weight (kg/m) |
|-----------|------------|-------------------|--------|-------------------------|------|------|------|------|------|------|-------|------|-------|-----------------------|--------|---------------------|-------|-----------------------|
| | | W | D | | d | E | F | G | f | g | L | T | H | h | kN | kgf | kN | |
| * DID 35E | 9.525 | 4.78 | (5.08) | 3.59 | 12.0 | 13.1 | — | 7.3 | — | 13.9 | 1.25 | 9.0 | 7.75 | 10.2 | 1,040 | 2.15 | 220 | 0.32 |
| DID 40E | 12.70 | 7.95 | 7.92 | 3.97 | 16.5 | 17.6 | — | 9.5 | — | 19.3 | 1.50 | 12.0 | 10.40 | 16.6 | 1,690 | 3.72 | 380 | 0.63 |
| DID 50E | 15.875 | 9.53 | 10.16 | 5.09 | 20.3 | 21.9 | — | 11.6 | — | 23.1 | 2.00 | 15.0 | 13.00 | 28.4 | 2,880 | 6.86 | 700 | 1.06 |
| DID 60E | 19.05 | 12.70 | 11.91 | 5.96 | 25.4 | 26.9 | — | 14.3 | — | 30.0 | 2.40 | 18.1 | 15.60 | 40.2 | 4,080 | 9.31 | 950 | 1.44 |
| DID 80E | 25.40 | 15.88 | 15.88 | 7.94 | 32.6 | — | 35.4 | — | 19.0 | 37.1 | 3.20 | 24.0 | 20.80 | 75 | 7,610 | 14.7 | 1,490 | 2.55 |
| DID 100E | 31.75 | 19.05 | 19.05 | 9.54 | 39.5 | — | 42.5 | — | 22.7 | 45.3 | 4.00 | 29.9 | 26.00 | 112 | 11,370 | 22.5 | 2,280 | 3.79 |
| DID 120E | 38.10 | 25.40 | 22.23 | 11.11 | 49.7 | — | 53.0 | — | 28.2 | 54.1 | 4.80 | 35.9 | 31.20 | 157 | 15,940 | 30.4 | 3,090 | 5.49 |

- Note: 1. Those marked with * indicate bushing chains.
- 2. Consult us for sizes not included in the chart or multiplex chains.
- 3. Ask us for the delivery time. Also, consult us for High Guard Chains not included in the chart.